



“ Because of **you**, we **can**
change and save lives. ”

If you knew one test could prevent your loved one from having a stroke, what would you do?

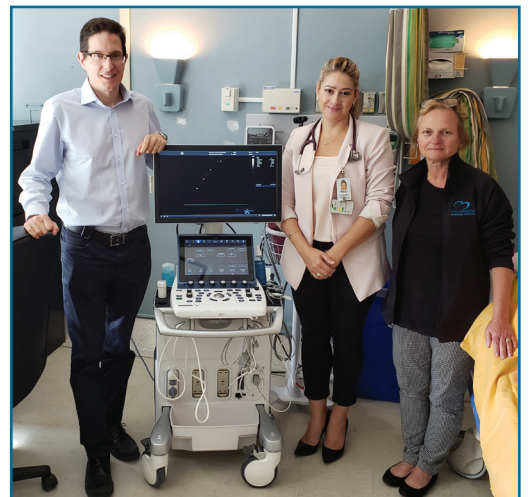
Most of us would ensure this test was widely available in our community for our loved ones and ourselves when we need it most. We would ensure that Stevenson Memorial Hospital had the latest equipment to facilitate this test quickly and close to home. Which is why we are asking you to consider a gift to support a brand new Echocardiogram (Echo) Machine for our community today.

An Echo can be a lifesaving procedure. It takes pictures of the heart and identifies damage to the arteries, valves, and heart structure. Patients are commonly referred for an Echo when they have shortness of breath, chest pain, palpitations, or experience fainting. Echos allow us to quickly provide diagnoses, when it matters most.

This non-invasive technology plays a life-saving role for patients with heart disease and related conditions. It's so crucial, we've seen a substantial increase in demand for Echos we do over the last 10 years at Stevenson, and it's considered one of the most important diagnostic tools for cardiologists to make diagnoses.

Which is why we have teamed up to match every gift made to the Echo Machine, up to \$10,000. There's never been a better time to give. **Join us today to have your gift doubled and make twice the impact on patient care at Stevenson.**

Our patients remind us every day how lucky we are to have compassionate people like you in our community. We hope you will join us by making a special holiday gift today to support the new Echo Machine, and fund other priority projects at Stevenson. For a limited time your tax-deductible gift has twice the impact.



Our former Echo Machine was dated, and parts were no longer available for purchase, making its replacement a top priority.

With the new machine, we can now offer contrast Echos which provide even better images by injecting a contrast dye. All of this means better diagnoses for our patients. Patients like Joan, a grandmother of four who had a clot in her heart which could have travelled to her brain, causing a stroke, had she not had this test. And for Doug, a 42-year-old father who came in with shortness of breath, and is now receiving immediate treatment for a heart condition.

The province funds only the hospital's operating costs, and those funds are non-transferable to capital purchases. **In other words, hospitals across Ontario must find their own funding to purchase and maintain equipment – everything from beds and stretchers to diagnostic imaging machines.**

We've also invested in software for the Echo Machine that helps reduce risks and increase efficiencies by allowing the patient data to enter straight into the patient's report, while the test is being done. All of this means better diagnoses for our patients.

At Stevenson, we're proud to be able to offer cardiac patient support close to home - this is only possible with support from people just like you.

We are forever grateful we can rely on the support of the community that we serve to keep up with the rapidly growing demand for care.

As always, thank you for giving so generously. We feel the impact of community support like yours in every corner of Stevenson.

Because of you, we can change and save lives, together.

With all our gratitude,



Lorraine Johnston
Nurse Practitioner/
Outpatient Clinic Manager



Dr. Peter Zeman
Cardiologist

P.S. Every dollar counts and goes directly to patient care and equipment like the Echo Machine at Stevenson. This special matching opportunity means there's never been a better time to support your community hospital with a holiday gift. **Send in your holiday gift today and have DOUBLE the impact!**