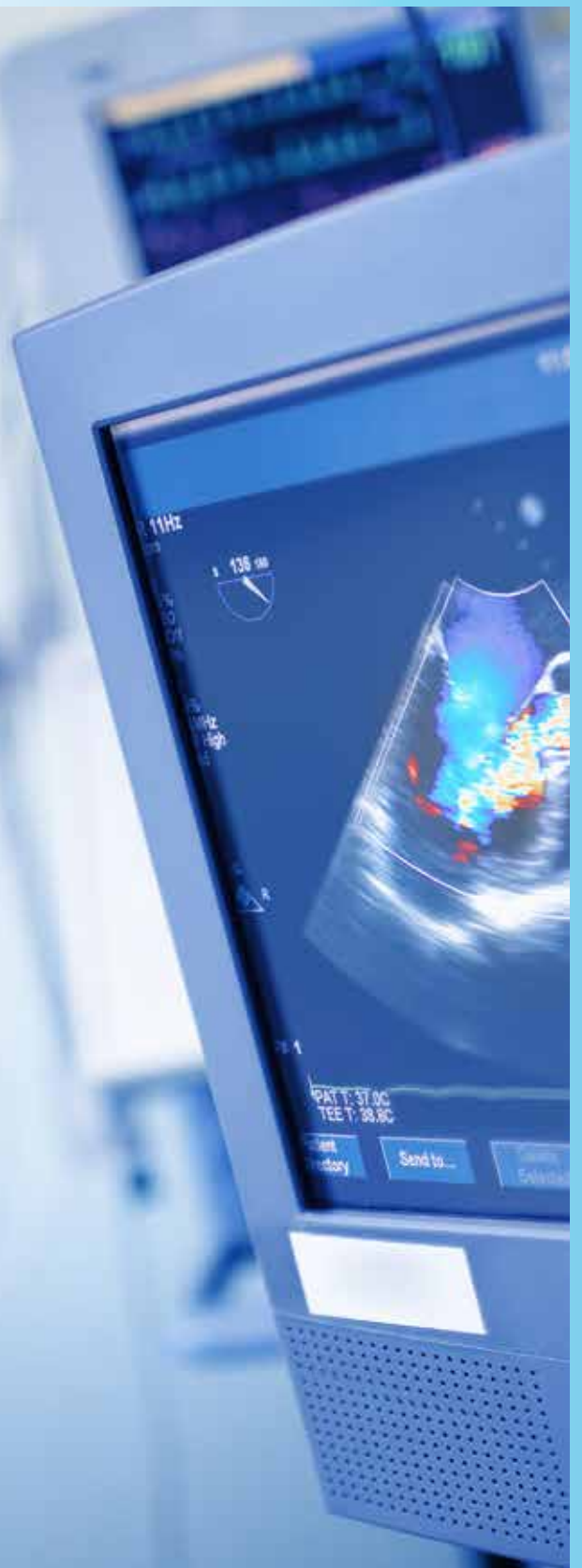




ESSENTIAL EQUIPMENT

Because of you, we can  
make faster diagnoses



## ESSENTIAL EQUIPMENT

# Because of you, we can make faster diagnoses

### NURSE CALL BELL SYSTEM

The NaviCare Nurse Call Bell System will facilitate 2-way communication directly between patients and their nurses. The state-of-the-art system will even include text messaging and voice capability.

### INFUSION PUMP – PHASE 2 WIRELESS

45 smart infusion pumps are now used hospital-wide to provide fluids and medication intravenously. Phase 2 allows them to be made wireless.

### *What many people don't realize...*

*Although it comes as quite a surprise to most people, in Ontario, a hospital's capital equipment expenditures must be entirely funded by its local community. Hospitals throughout the province must source their own funding to both purchase and maintain equipment – everything from beds and stretchers to diagnostic imaging machines. Not even projects like ours are fully funded by the government.*



## ECHOCARDIOGRAPHY MACHINE

Getting an echocardiogram (ECHO) can be a life-saving procedure. ECHOs quickly identify issues related to the arteries, valves and structure of the heart so that doctors can promptly diagnose the presence and severity of heart valve problems. ECHOs can also determine abnormal flow within the heart that occurs with congenital heart disease.



## Because of you, we can provide exceptional health care close to home



**Mary Thomas**  
Chief Executive Officer  
705 435-6281 x3209  
mthomas@smhosp.on.ca



**Melody McLean**  
Director of Development  
& Capital Campaign Manager  
705 435-6281 x1263  
mmclean@smhosp.on.ca



**Sylvia Biffis**  
Capital Campaign Chair

With a leadership gift, you can join a select group of Transformer Level Supporters for whom we are especially thankful:

